

A close-up, high-contrast photograph of an elephant's head and trunk. The elephant's skin is highly textured with deep wrinkles and folds. The trunk is thick and curved, showing similar wrinkling. The lighting is dramatic, highlighting the textures against a dark background. The word "ULTRA" is overlaid in white, sans-serif capital letters. A red line starts from the bottom of the letter 'A', extends to the right, then turns vertically down, and finally extends diagonally down and to the left, ending under the letter 'A'.

ULTRA

ARIOSTEA HIGHTECH



ULTRA | BIGGEST

ARIOSTEA^{HIGHTECH}

300 x 150 cm SIZE

WITH ITS AREA OF 4.5m², ULTRA IS THE NEW INDUSTRY STANDARD FOR PROJECT DESIGNERS AND FOR ALL PROJECTS WHERE DIMENSIONS MAKE THE DIFFERENCE

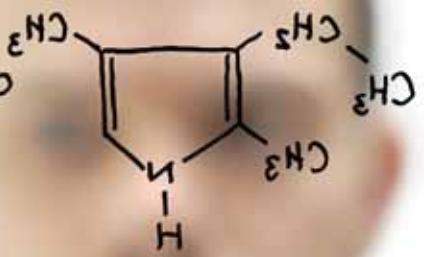
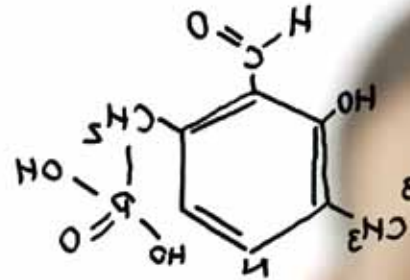
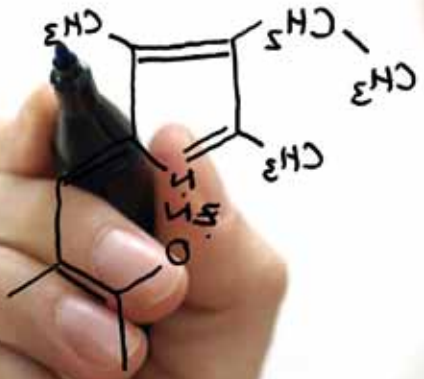


ULTRA | LIGHTEST

ARIOSTEA HIGHTECH

3 and 6 mm THICKNESSES

THANKS TO ITS NATIVE 3 OR 6 mm THICKNESS,
ULTRA PROVIDES LIGHTNESS AND STRENGTH
IN ALL APPLICATIONS - EVEN THE ONES YOU'D
NEVER EVEN IMAGINED



ULTRA | RESEARCH

ARIOSTEA HIGHTECH

ULTRA TECHNOLOGY

ULTRA IS THE RESULT OF ONGOING INVESTMENT IN RESEARCH, DEVELOPMENT AND INNOVATION, WHICH ARIOSTEA MAINTAINS TO COME UP WITH POSSIBLE DESIGN APPLICATIONS THAT ARE ALWAYS FRESH AND NEW



ULTRA | TAILORED

ARIOSTEA HIGHTECH

CUSTOM SIZED JUST FOR YOU

ULTRA OFFERS UNMATCHED PROJECT FLEXIBILITY
AND THE FREEDOM TO GIVE CONCRETE FORM TO
YOUR IDEAS WITHOUT BEING SHACKLED BY SIZE



ULTRA | SMOOTHING

ARIOSTEA HIGHTECH

SMOOTH AS SILK

THE LARGE SURFACES ARE PRODUCED IN A UNIFORM WAY TO PROVIDE AN ELEGANT FEEL, BECAUSE SIGHT IS NOT OUR ONLY SENSE



ULTRA | SUSTAINABLE

ARIOSTEA HIGHTECH

ECO-FRIENDLY TECHNOLOGY

WITH ITS LIGHT SLABS OBTAINED THROUGH ADVANCED TECHNOLOGY, ULTRA OPTIMIZES THE USE OF MATERIALS AND LOWERS CO₂ PRODUCTION

ARIOSTEA Spa
via Cimabue, 20
42014 Castellarano (RE)

TELEFONO +39 0536 816811
FAX ITALIA +39 0536 816838
FAX ESTERO +39 0536 816858

Numero Verde **800-214252**

WWW.ARIOSTEA.IT

